

How to integrate a UNIVIEW camera on a GIGAMEDIA recorder

[ONVIF Protocol]



Before start :

- What is the ONVIF Protocol : It's a global standard for the interoperability of IP security products. It allows IP video surveillance products from different brands to be able to communicate each other. There are different ONVIF Profiles used to retrieve video stream but also for controlling PTZ cameras, using Input/Output alarms, triggering motion detection,...
- You need to add manually you camera
- Make sure that the profile of he camera to integrate is compatible with your recorder
- Also make sure that your camera's video settings are compatible with your recorder (Maximum resolution, Codec, bandwidth used, ...)
- **Before starting to add your camera, make sure you know IP address, user/password of your camera and respect the IP range of the other cameras**

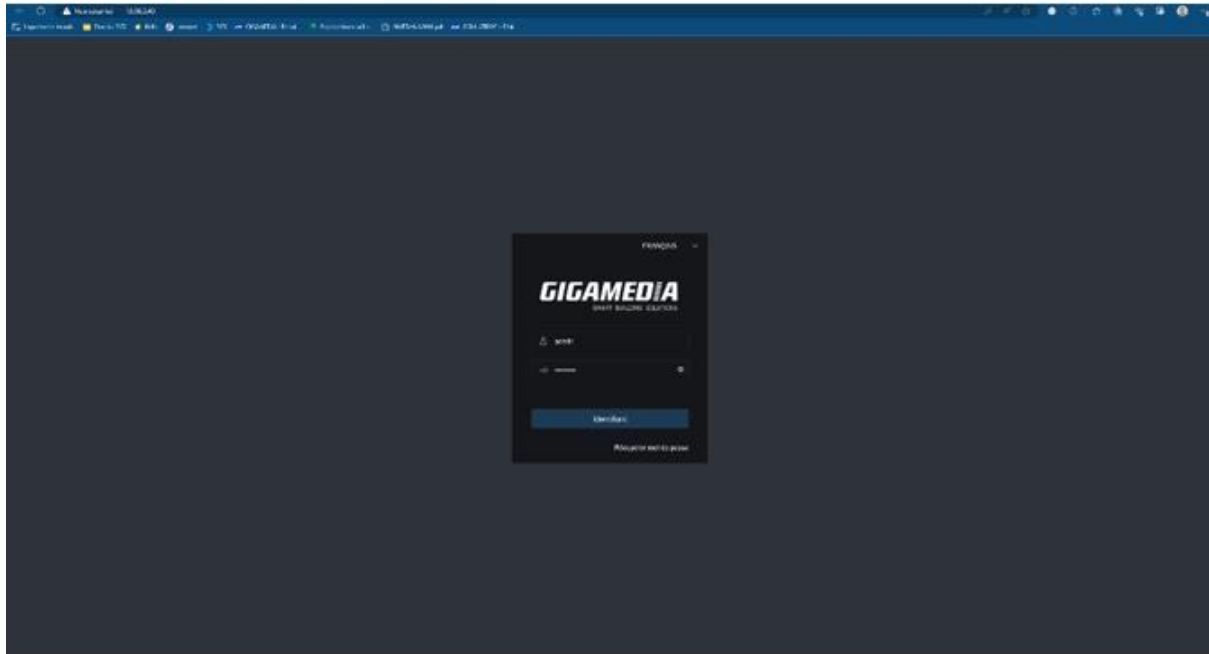
For this example, we are going to add a UNIVIEW camera into a GIGAMEDIA Recorder.

By default, ID/password for UNIVIEW camera is admin/123456

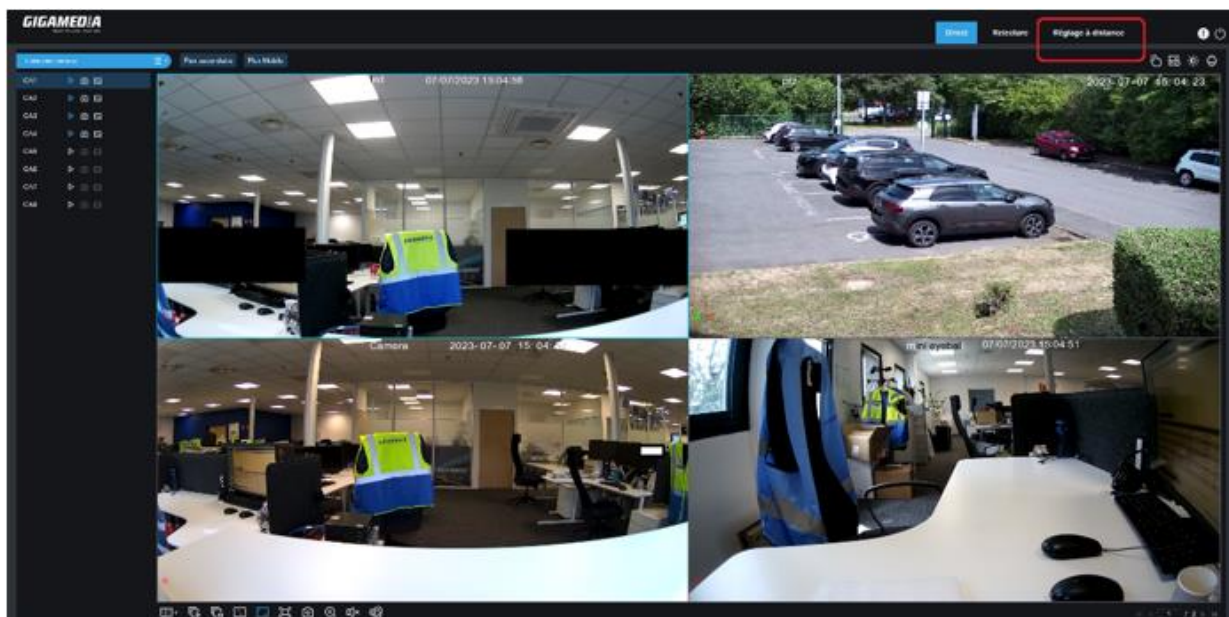
If you don't know IP address of your camera, please download utility from UNIVIEW named EZTools.

Here, IP address of the camera is 10.36.0.16 and ID/password : admin/123456

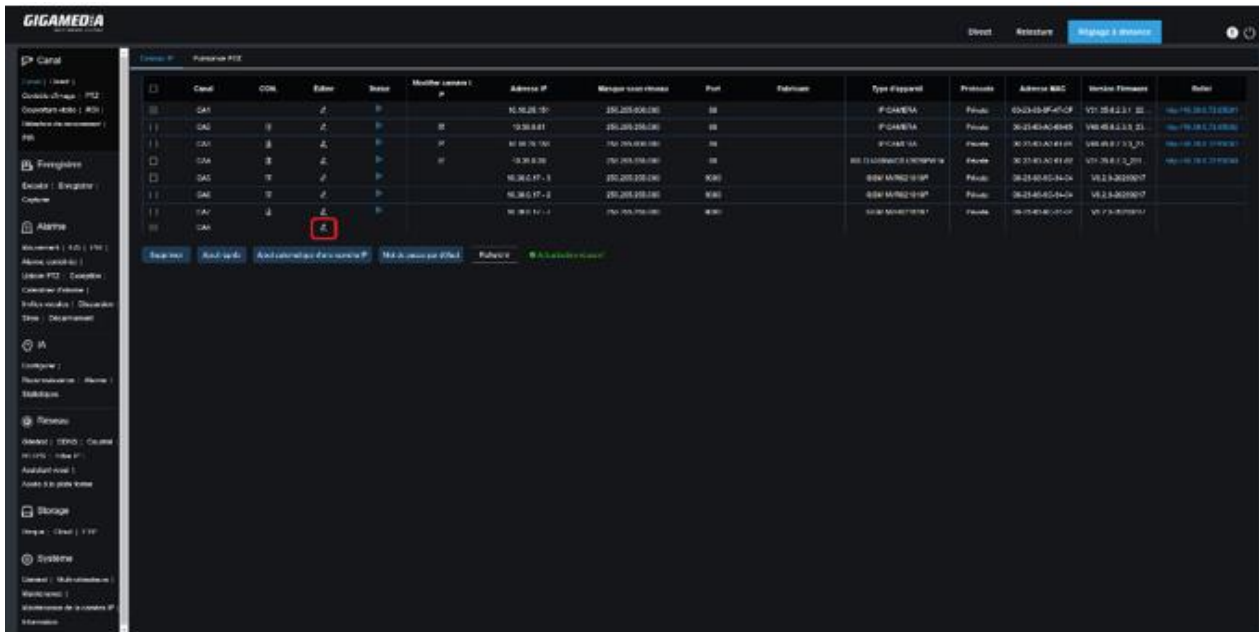
To start, Go to the Web Interface of you GIGAMEDIA recorder by typing its IP address in the search bat and typing in the identifiers.



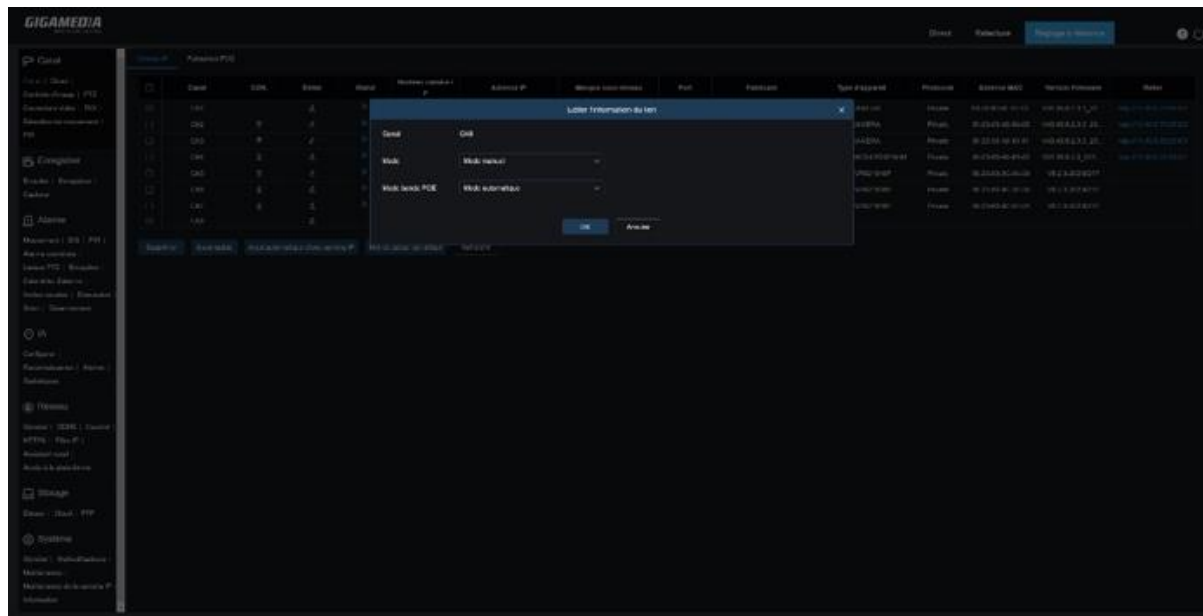
Then Go to « Remote Settings » / Channel / IP Channels



Then, you must switch to Manuel Mode by Clicking on « Edit »



Now Switch to Manuel Mode.



Then, Press the « + » to add the camera

Canal	CON.	Editer	Status	Modifier caméra IP	Adresse IP	Masque sous-réseau	Port	Fabricant	Type d'appareil	Protocole	Adresse MAC	Version Firmware	Relevé
CA1					10.10.25.151	255.255.000.000	80		IP CAMERA	Private	00-23-83-4F-47-CF	V31.35.8.2.3.1_22...	http://10.36.0.72:8080/
CA2					10.36.0.81	255.255.255.000	80		IP CAMERA	Private	00-23-83-A3-88-85	V40.45.8.3.3.3_23...	http://10.36.0.72:8080/
CA3					10.10.25.183	255.255.000.000	80		IP CAMERA	Private	00-23-83-A3-81-81	V40.45.8.3.3.3_23...	http://10.36.0.72:8080/
CA4					10.36.0.36	255.255.255.000	80		RS-CH400MACS-LV020W-M	Private	00-23-83-A3-81-82	V31.35.8.2.3_221...	http://10.36.0.72:8080/
CA5					10.36.0.17 - 3	255.255.255.000	9000		GDM NV102 1010P	Private	00-23-83-9C-34-04	V8.2.3-20230217	
CA6					10.36.0.17 - 2	255.255.255.000	9000		GDM NV102 1010P	Private	00-23-83-9C-34-04	V8.2.3-20230217	
CA7					10.36.0.17 - 7	255.255.255.000	9000		GDM NV102 1010P	Private	00-23-83-9C-34-04	V8.2.3-20230217	
CA8													

Now, enter Login information and don't forget to put "ONVIF" for Protocol.

Ajouter caméra IP

Canal

CA8

Adresse IP

10.36.0.16

Port

9988

(1 ~ 65535)

Protocole

Onvif

Mode de connexion

Général

Nom d'utilisateur

admin

Mot de passe

123456

OK

Annuler

Your camera is now well added !