

How to configure your Access Point Wifi in Repeater Mode ?



Valid for those references :

- GGM WAPCD2
- GGM WAPCD3
- GGM WAPEXT24
- GGM WAPEXTD

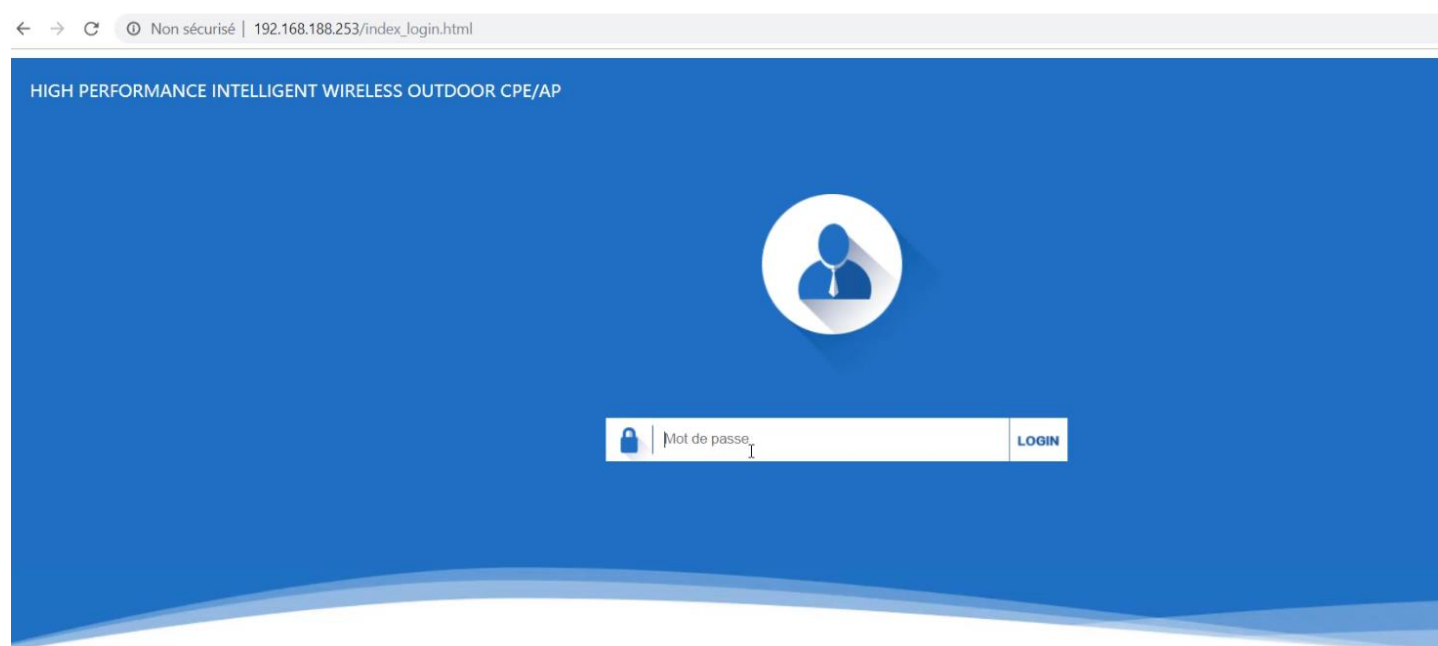
First, you have to login to the Web Management with your computer and your Web Browser such as Chrome or Internet Explorer.

Please make sure that you are in the same network

You need to change the TCP/IP settings

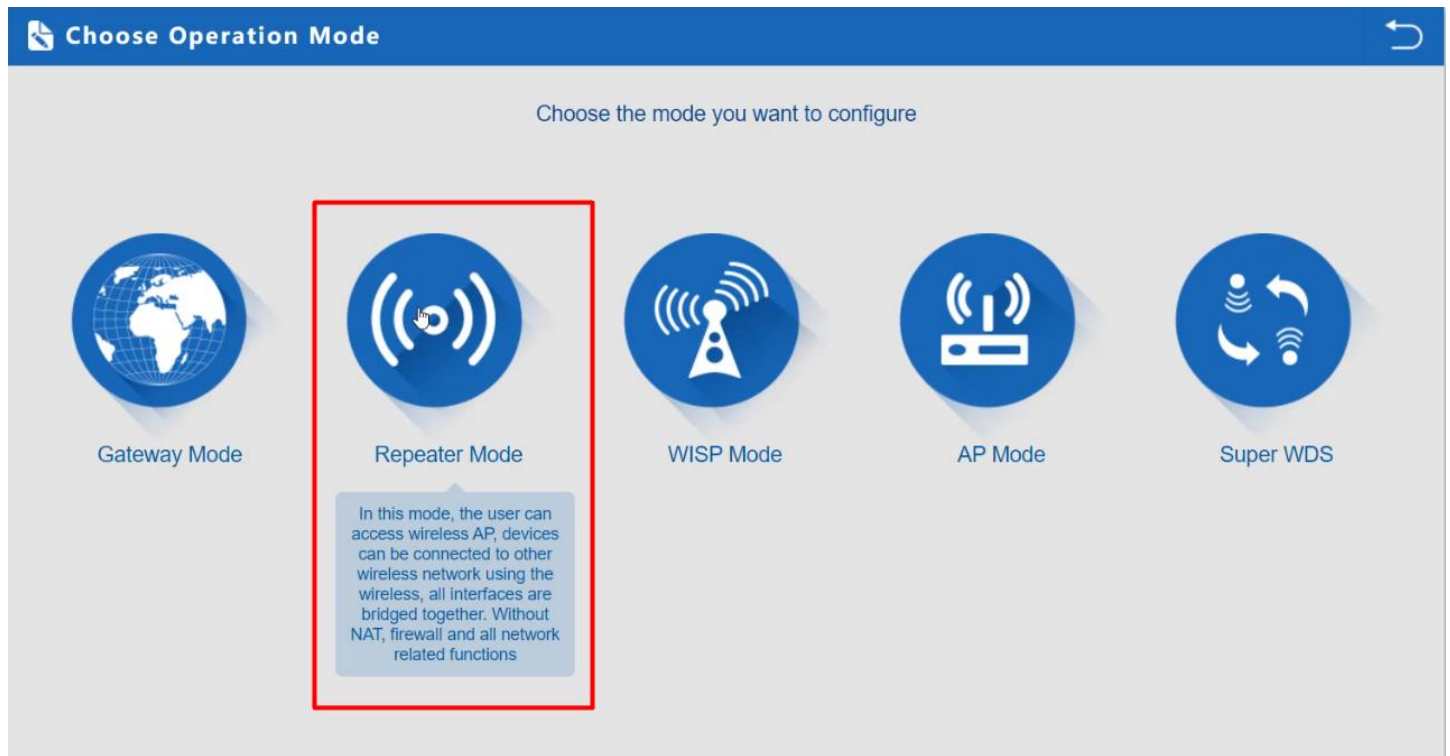
IP address range between 192.168.188.2 and 192.168.188.252

IP Address by default : 192.168.188.253



Step 1 : Enable Wireless Relay Settings

Go to Wizard and Choose Repeater Mode



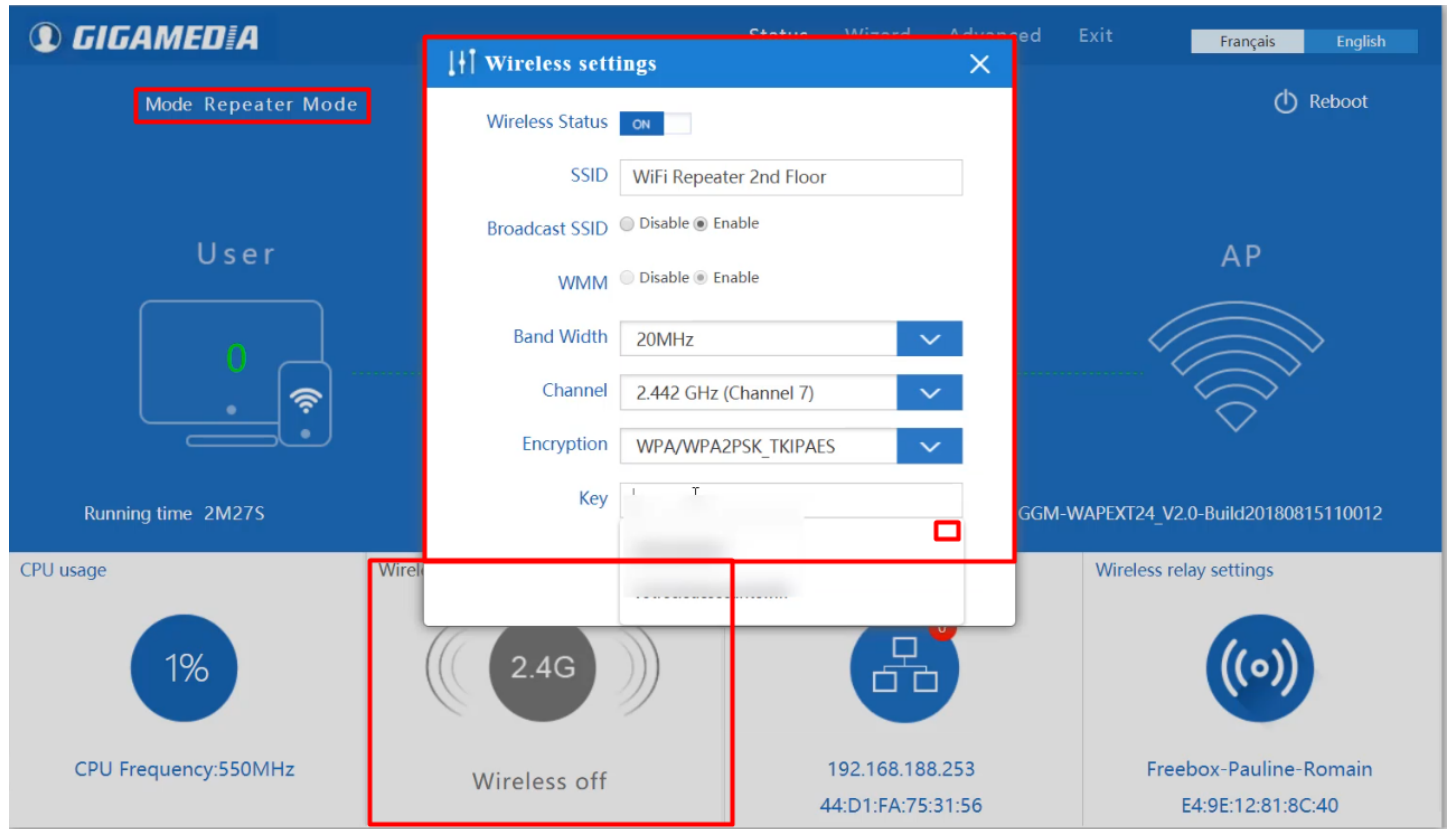
Scan SSID you want to use from your router

Disable : WDS Passthrough

Step 2 : Enable Wireless Settings

Create your own Wireless AP with :

- SSID
- Encryption Mode
- Security Key



After restarting your device, your AP is now in Repeater Mode

Step 3 : Verification and Enjoy !