

GGM KITAHD

Change the Recording Mode

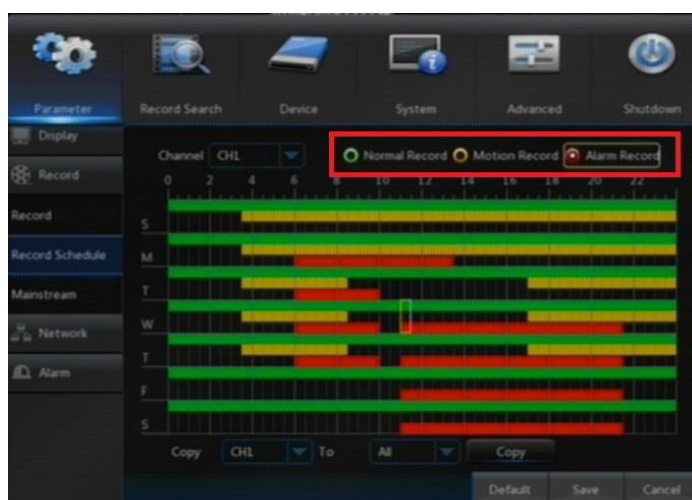


Valid for those references :

- GGM CCKITAHD
- GGM CCKITAHD4
- GGM CCKITAHD8
- GGM CCEL2KITAHD4
- GGM CCKITAHD 1080P
- GGM CCAHDXX
- GGM CCELXX

Where and How ?

Go to the Main Menu and then Parameter then Record and Record Schedule



- **Normal Record (GREEN)** = Continuous Recording
- **Motion Record (YELLOW)** = Motion Detection Recording
- **Alarm Record (RED)** = Recording from Alarm contacts (I/O Port)
- **No Color** = No Record.